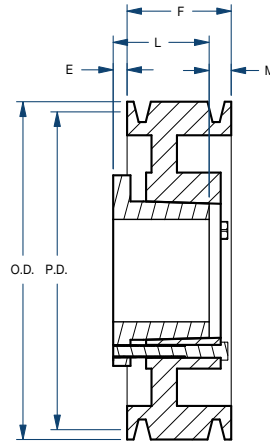


Sheaves

1C/QD STYLE



BLACKSTAR®



Type D

Part No.	Bushing	Bore Range (in)	Type	Diameter (in)		Dimensions (in)				Weight less Bushing (lbs)
				Pitch	Outside	E	F	L	M	
1C70SF	SF	1/2 – 2-15/16	D	7.0	7.40	27/32	1-1/4	2-1/16	1/32	10.0
1C75SF	SF	1/2 – 2-15/16	D	7.5	7.90	27/32	1-1/4	2-1/16	1/32	12.0
1C80SF	SF	1/2 – 2-15/16	D	8.0	8.40	27/32	1-1/4	2-1/16	1/32	13.0
1C85SF	SF	1/2 – 2-15/16	D	8.5	8.90	27/32	1-1/4	2-1/16	1/32	14.0
1C90SF	SF	1/2 – 2-15/16	D	9.0	9.40	27/32	1-1/4	2-1/16	1/32	15.0
1C95SF	SF	1/2 – 2-15/16	D	9.5	9.90	27/32	1-1/4	2-1/16	1/32	16.0
1C100SF	SF	1/2 – 2-15/16	D	10.0	10.40	27/32	1-1/4	2-1/16	1/32	17.0
1C105SF	SF	1/2 – 2-15/16	D	10.5	10.90	27/32	1-1/4	2-1/16	1/32	18.0
1C110SF	SF	1/2 – 2-15/16	D	11.0	11.40	27/32	1-1/4	2-1/16	1/32	19.0
1C120SF	SF	1/2 – 2-15/16	D	12.0	12.40	27/32	1-1/4	2-1/16	1/32	20.0
1C130SF	SF	1/2 – 2-15/16	D	13.0	13.40	27/32	1-1/4	2-1/16	1/32	22.0
1C140SF	SF	1/2 – 2-15/16	D	14.0	14.40	27/32	1-1/4	2-1/16	1/32	24.0
1C160SF	SF	1/2 – 2-15/16	D	16.0	16.40	27/32	1-1/4	2-1/16	1/32	26.0
1C180SF	SF	1/2 – 2-15/16	D	18.0	18.40	27/32	1-1/4	2-1/16	1/32	30.0
1C200SF	SF	1/2 – 2-15/16	D	20.0	20.40	27/32	1-1/4	2-1/16	1/32	35.0
1C240SF	SF	1/2 – 2-15/16	D	24.0	24.40	27/32	1-1/4	2-1/16	1/32	41.0